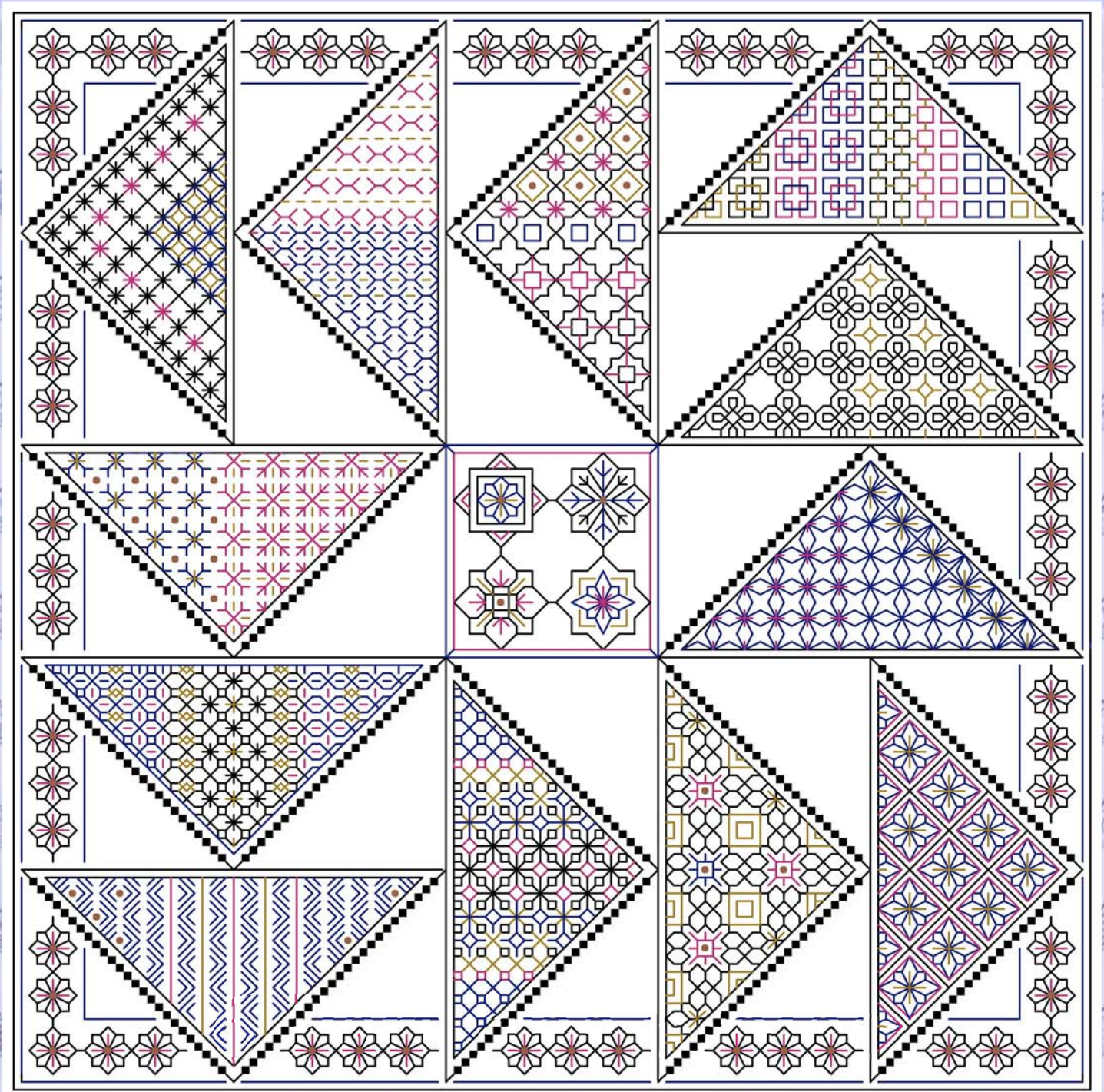
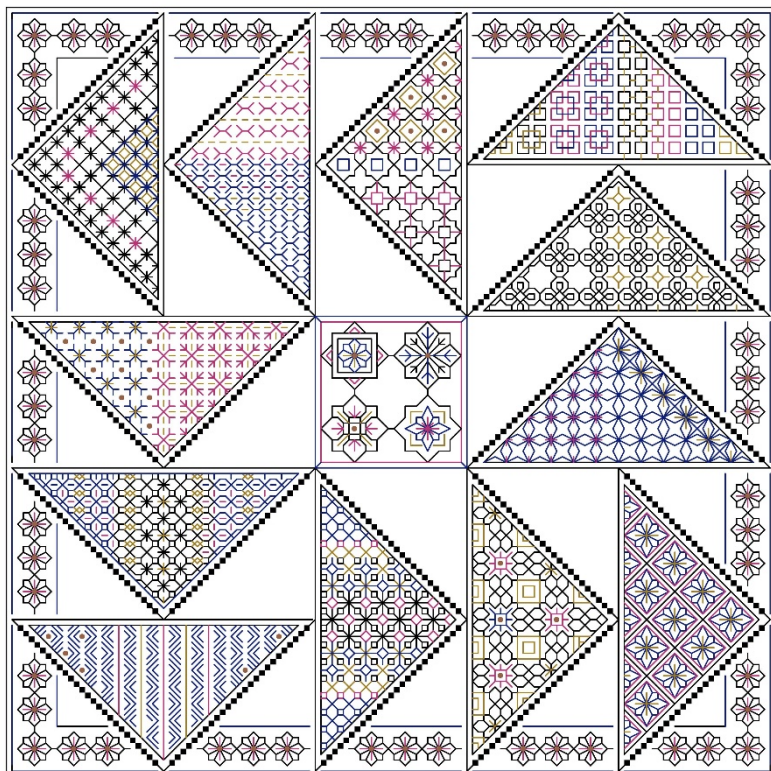


Flying Geese Part 6



based on
EB0029 Triangle Trail

Flying Geese Part 6 Conclusion - Motifs and Border



Design Area: 9.43 x 9.43 inches.

Stitches: 139 x 139

Fabric: Zweigart 28 count evenweave or, 14 count Aida, 14 x 14 inches. NB. If using Aida fabric there may be some split blocks.

Threads: DMC stranded floss in colours of your choice.

Cross stitch, two strands, back stitch, one strand

Rainbow Gallery Petite Treasure braid or DMC Metallic E3852 dark gold, or an alternative thread may be used to add sparkle and interest.

Mill Hill Glass Beads are optional. MHG 557 Gold, one packet or alternative colour.

Tapestry Needle No.24

Small embroidery ring or frame

Legend:

◼ ◼ [2] DMC-310 ANC-403 DLE- JPC-8403 black

Backstitch Lines:

— DLE-E3852 Dark Gold
— DMC-310 black

— DMC-718 plum
— DMC-796 royal blue - dk

Beads:

○ MHG-557 Mill Hill Glass Beads-Gold

Key – threads used on sampler

1. Motifs:

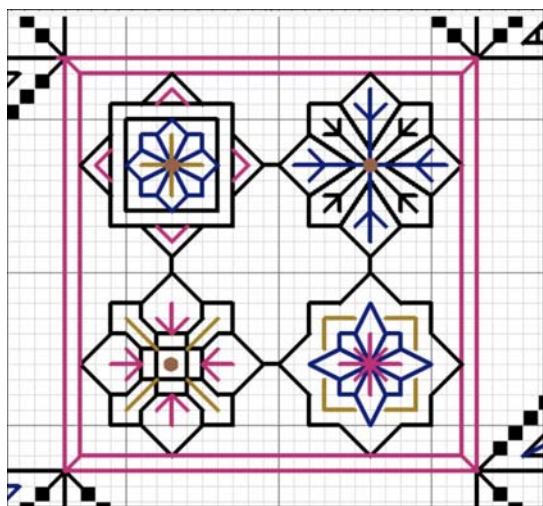
Now the triangles have been completed add the motifs to the centre of the design. Use one strand of floss.

2. Border:

The border consists of flower motifs set within the triangle pattern. Rows of back stitch define the edges of the border. Use one strand of floss. Follow the chart carefully to place the border correctly.

3. Add the beads where you think they are needed. You may decide to use more depending on the colour scheme you have chosen.

4. Place the finished embroidery face down on a soft towel and press lightly.

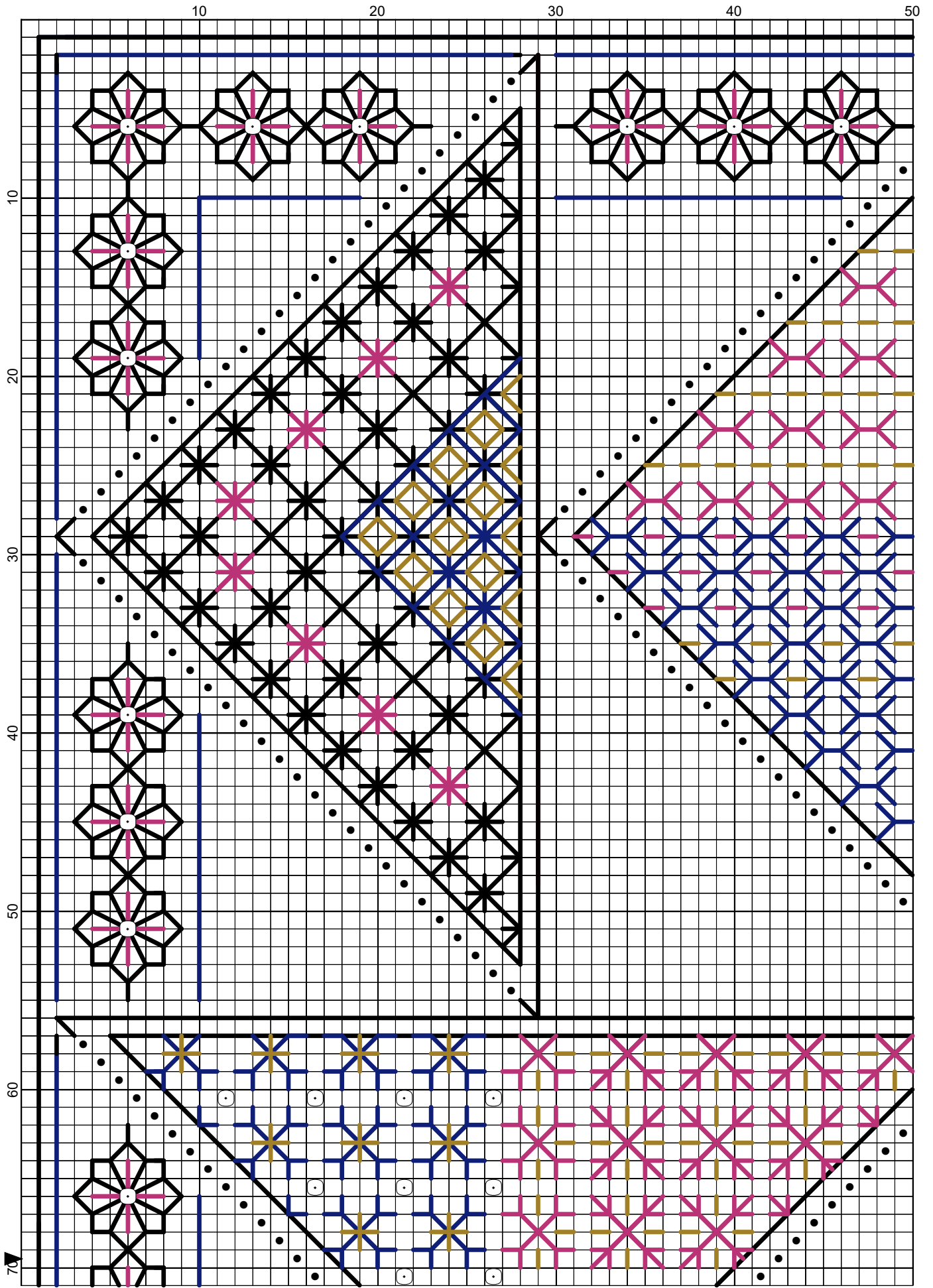


I hope you have enjoyed working this design. If you have any queries, please e-mail:

lizalmond@blackworkjourney.co.uk

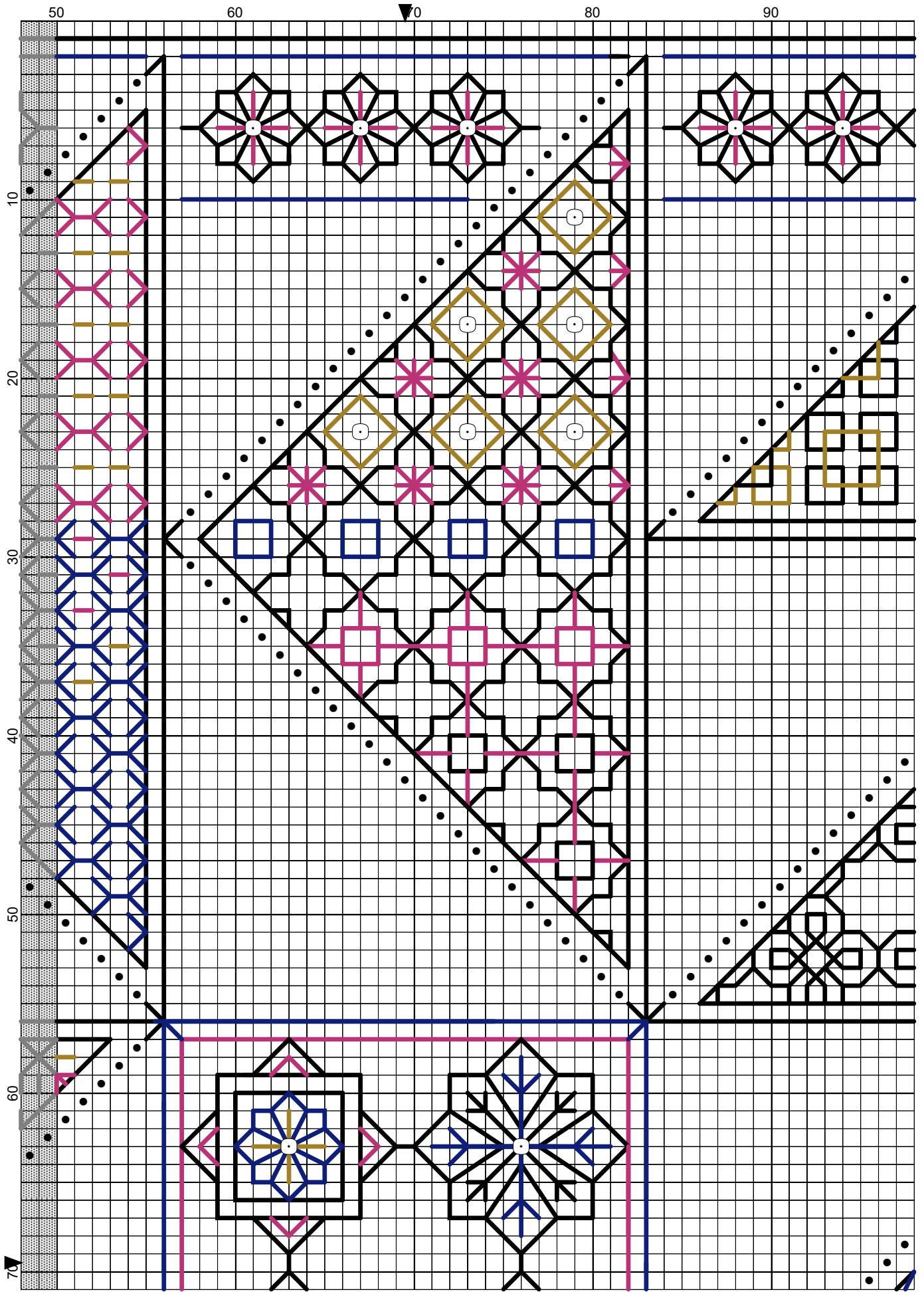
Happy stitching,

Liz



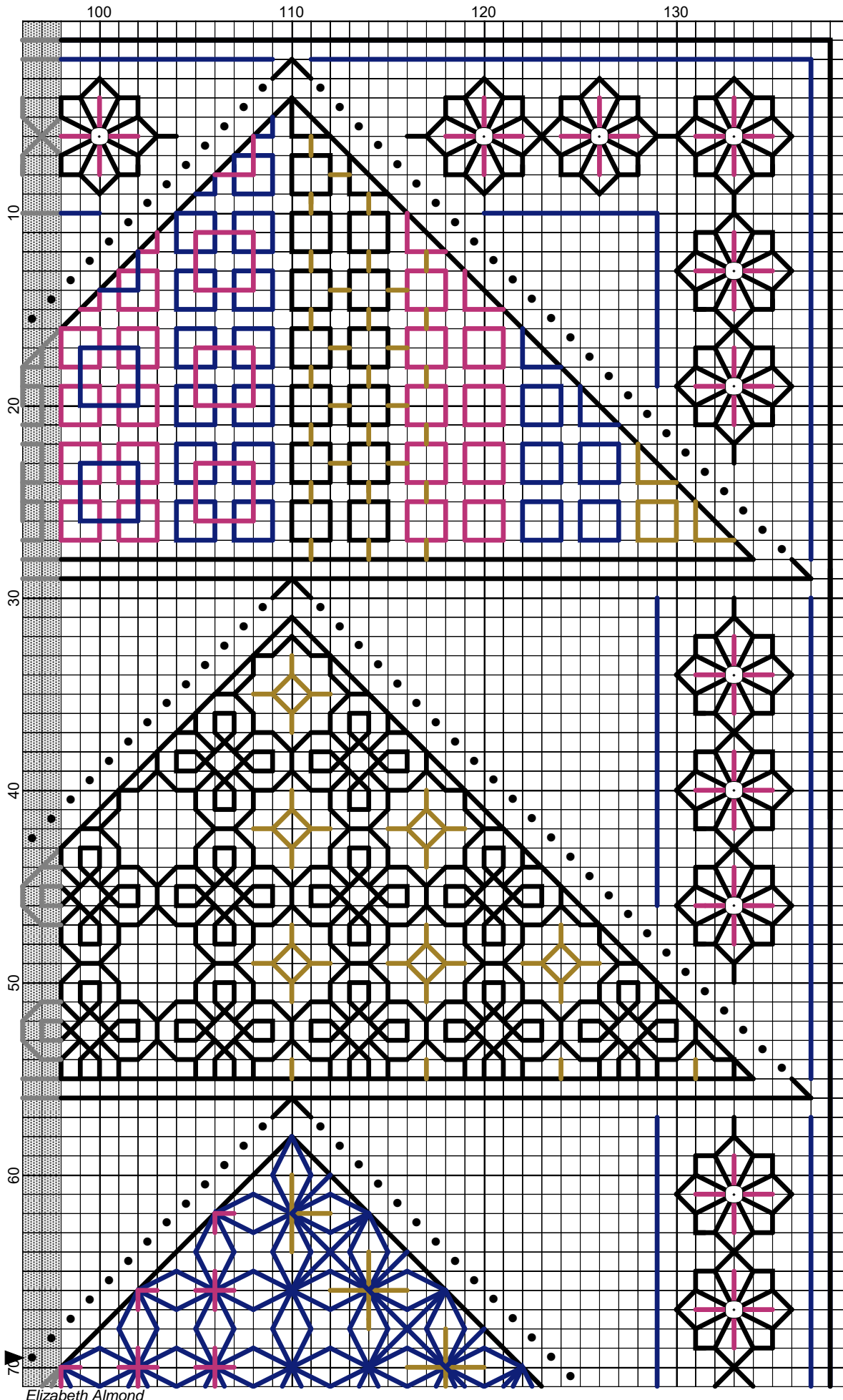
Elizabeth Almond

Part 6 Flying Geese Conclusion

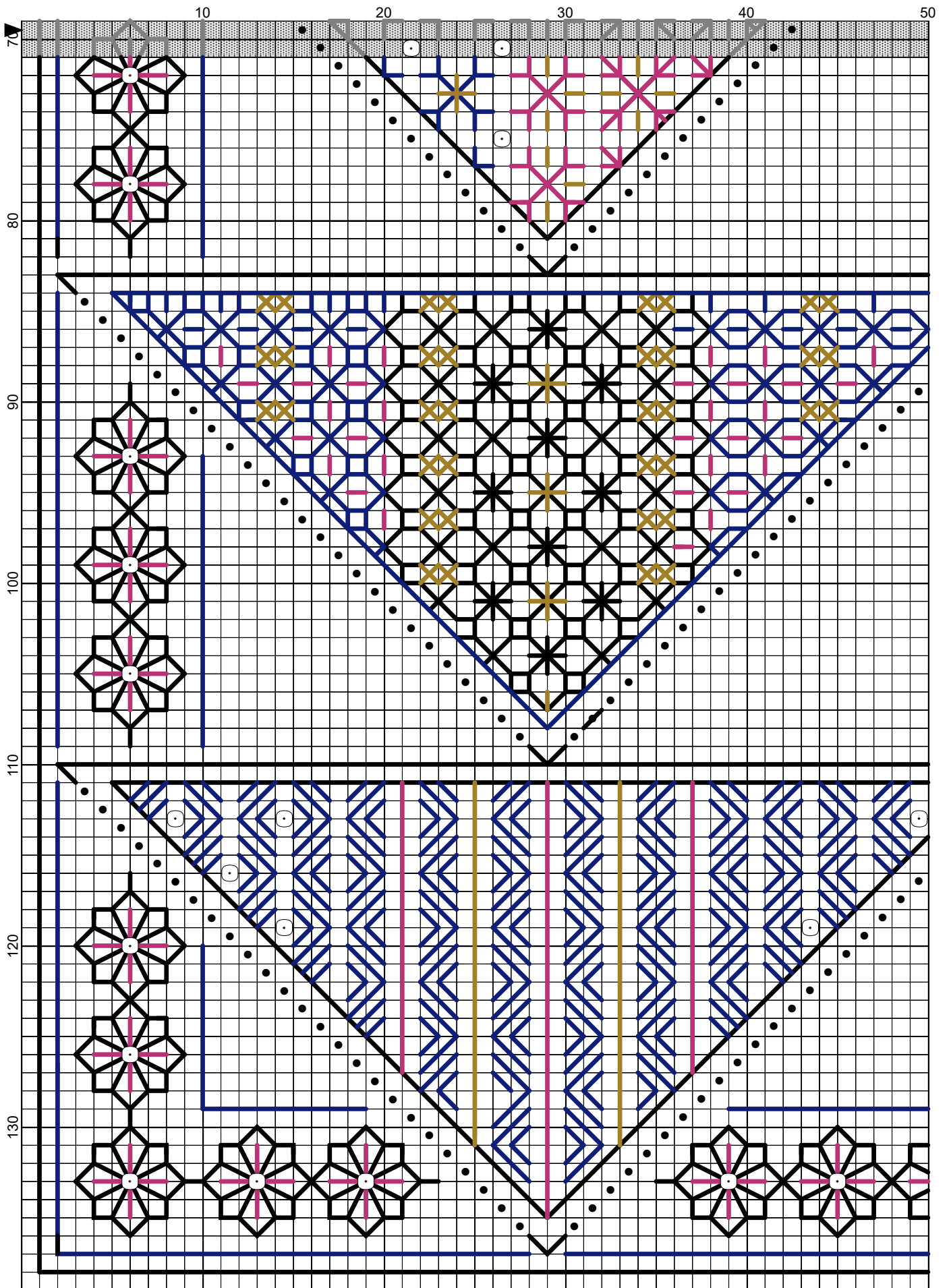


Elizabeth Almond

Part 6 Flying Geese Conclusion

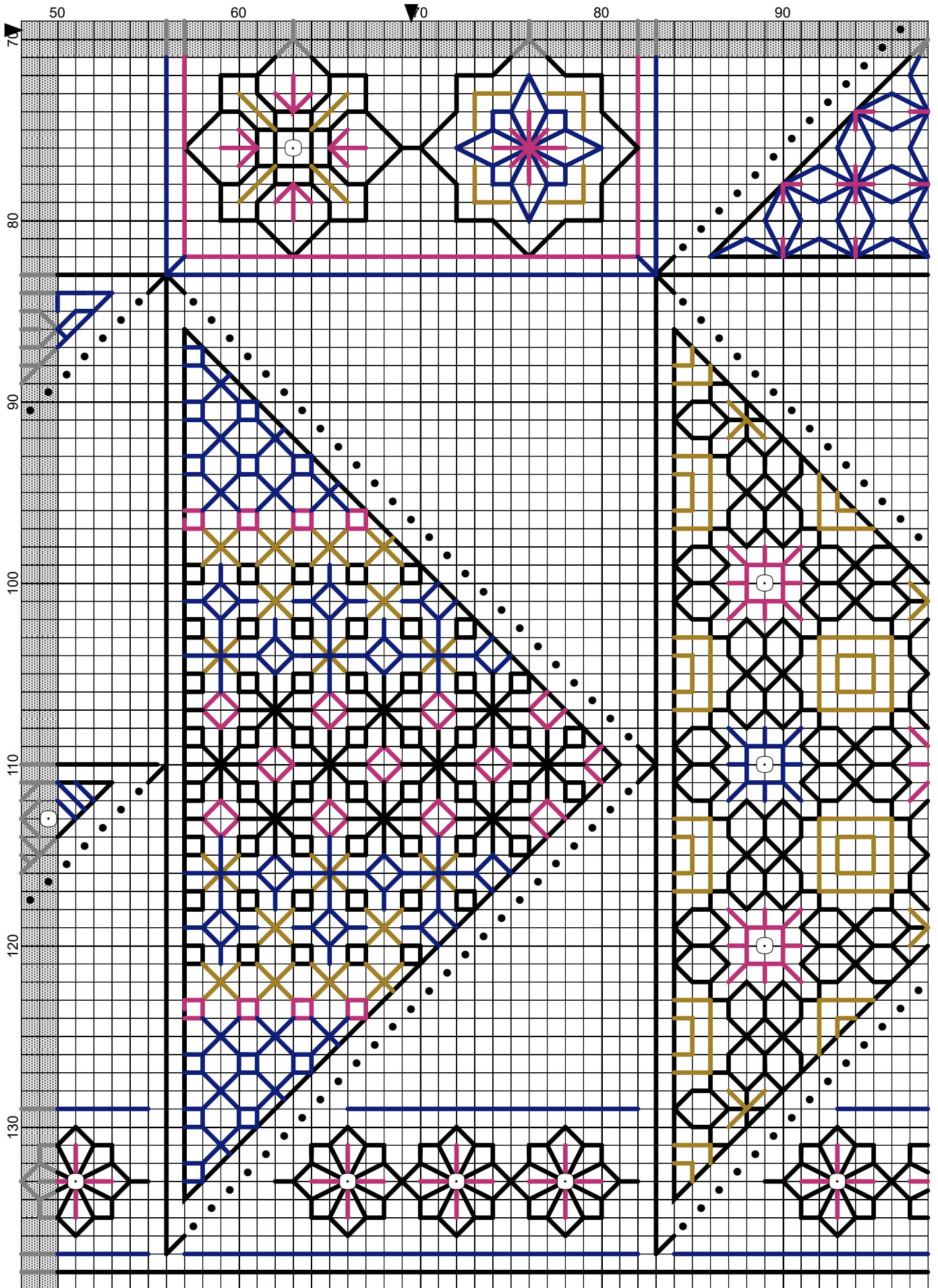


Elizabeth Almond



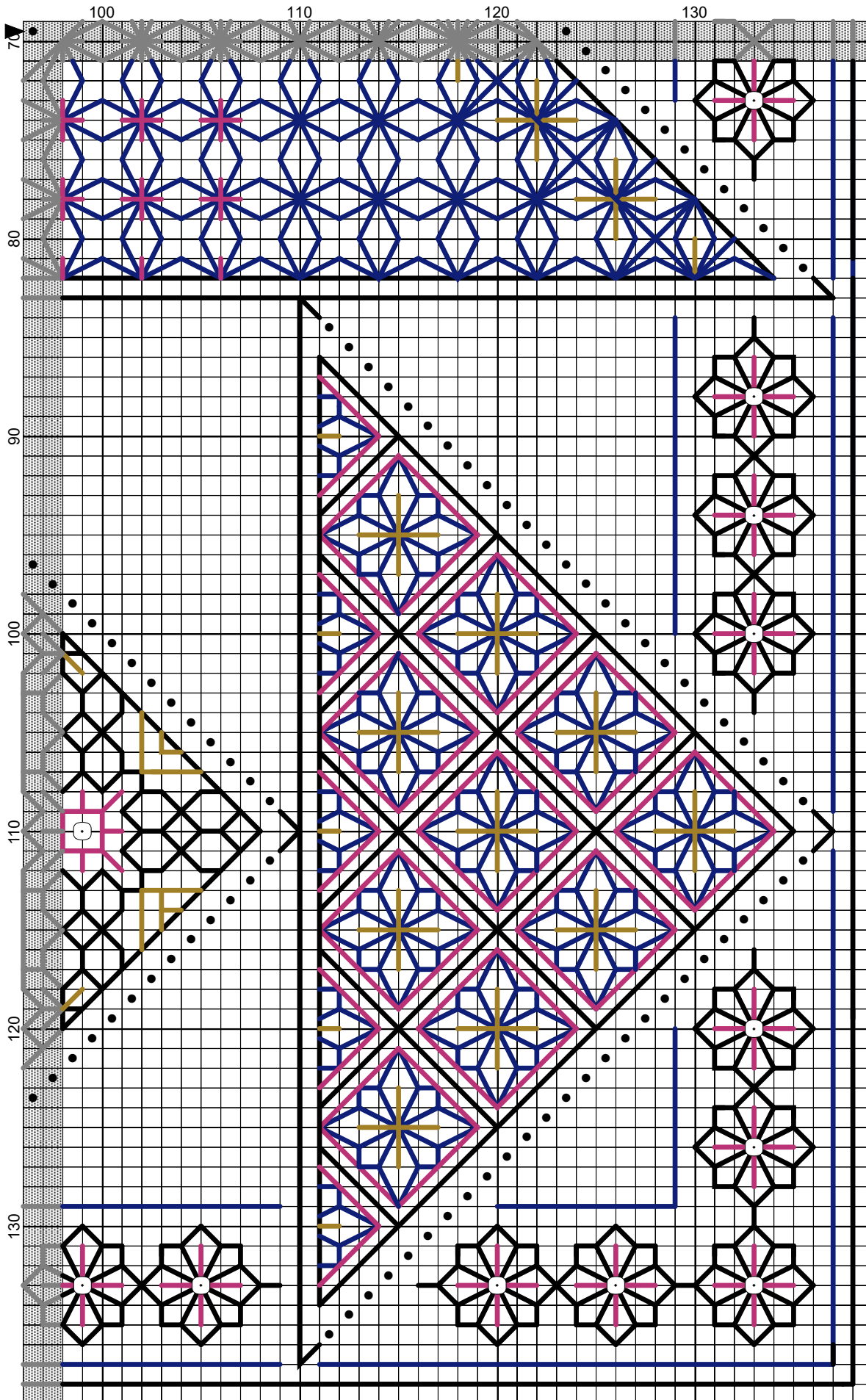
Elizabeth Almond

Part 6 Flying Geese Conclusion



Elizabeth Almond

Part 6 Flying Geese Conclusion



Elizabeth Almond

Part 6 Flying Geese Conclusion

Author: Elizabeth Almond
Copyright: Elizabeth Almond
Grid Size: 139W x 139H
Design Area: 24.93" x 16.21" (349 x 227 stitches)

Legend:

◻ ◼ [2] DMC-310 ANC-403 DLE- JPC-8403 black

Backstitch Lines:

— DLE-E3852 Dark Gold — DMC-718 plum
— DMC-310 black — DMC-796 royal blue - dk

Beads:

◉ MHG-557 Mill Hill Glass Beads-Gold